



Ron Smith & Associates, Inc.

Testing Division

www.RonSmithandAssociates.com | testing@ronsmithandassociates.com

Summary Report

Fall 2020 Latent Print Processing Proficiency Test #20502
Issued: November 20, 2020

On September 7, 2020, Ron Smith and Associates, Inc. (RS&A) shipped the Latent Print Processing Proficiency Test #20502. Participants were required to submit their responses no later than October 19, 2020 in order for them to be included in this summary report.

A total of 80 tests were ordered and shipped, with 54 participants returning their responses. **This summary report is based on 211 individual responses (54 participants returning up to 4 responses each).** The test included four items for latent print processing.

The results presented in this report reflect whether or not the participants' submitted results agree or disagree with the assigned values garnered from pre-distribution testing and outlined in ***The Manufacturer's Report*** (Appendix 1). The primary purpose of a Summary Report is to provide an overall documentation of all the submitted responses. It is RS&A's intention to go a step further by providing more meaningful statistical results through analyzing the submitted responses in relation to the demographics obtained from each of the examiners participating in this proficiency test. All results and statistics for this test will be outlined through graphs and charts found in the remainder of this report.

Prior to distribution of this test, all of the expected responses were determined to be either "positive" or "negative" for friction ridge detail. In designing this proficiency test, it is understood that sometimes friction ridge detail may be present on an item during the manufacturing process. For this reason, all items are cleaned prior to being included in a test. Because of the latent nature of the prints, it is possible that some portions of friction ridge detail can be missed in the cleaning process. To satisfy this condition for the test, all developed friction ridge detail has to be photographed in order to be given credit. If the photograph is accepted, the participant will be given credit for the friction ridge development in instances when the expected answer was negative.

RS&A strives to maintain the confidentiality of all of its clients and participants. All results are obtained and published using randomly generated test codes. RS&A will not release the identity of any participant without the written consent of the participant and/or the agency involved.

For any additional information, please contact the Proficiency Testing Coordinator at testing@ronsmithandassociates.com or by calling toll free at 1-866-832-6772.

Appendix 1

Test Manufacturer's Information

Fall 2020 Latent Print Processing Proficiency Test #20502

The test consisted of four items labeled as Item #1 (ID Holder), Item #2 (Key), Item #3 (Key Tag) and Item #4 (Post-it-Note). The items were similar to those normally encountered in latent print casework. The participant was required to process the exhibits for the presence of friction ridge detail. The assigned values below were determined through the ground truth information and verified through unanimous agreement during pre-distribution testing.

Item #	Assigned Value
Item #1 (ID Holder)	Ridge Detail <u>Was</u> Developed– Supported with Electronically Captured Image
Item #2 (Key)	Ridge Detail <u>Was Not</u> Developed
Item #3 (Key Tag)	Ridge Detail <u>Was</u> Developed– Supported with Electronically Captured Image
Item #4 (Post-it-Note)	Ridge Detail <u>Was</u> Developed– Supported with Electronically Captured Image

Individual reports will be provided to participants on or before mid November 2020. The final summary report for this test will be posted on the Ron Smith and Associates website at <http://www.ronsmithandassociates.com/proficiency/lpprocessing.html> by late November 2020.

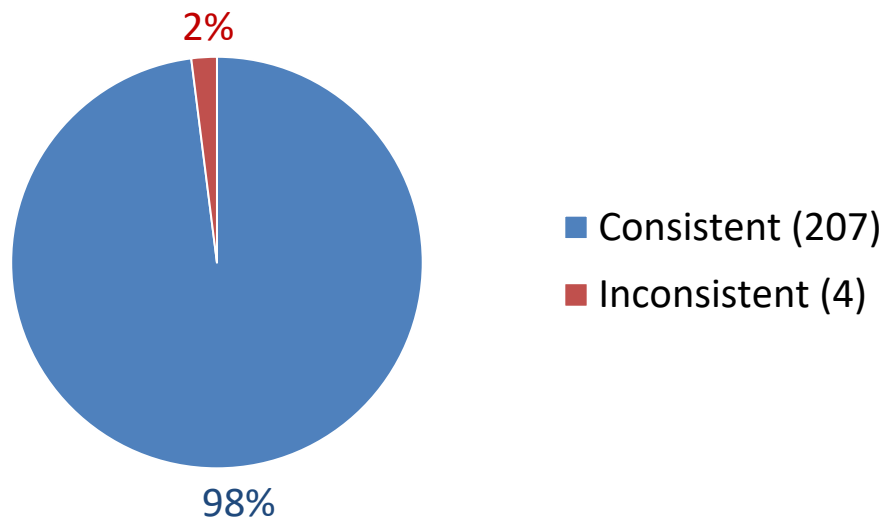
It is recommended to postpone evaluating an individual's performance until after you have received the statistical averages contained in the summary report.

For questions or further information, contact the Proficiency Testing Coordinator by emailing testing@ronsmithandassociates.com or call toll free at 1-866-832-6772.

Authorized by: Ron Smith, President
Issue Date: November 3, 2020

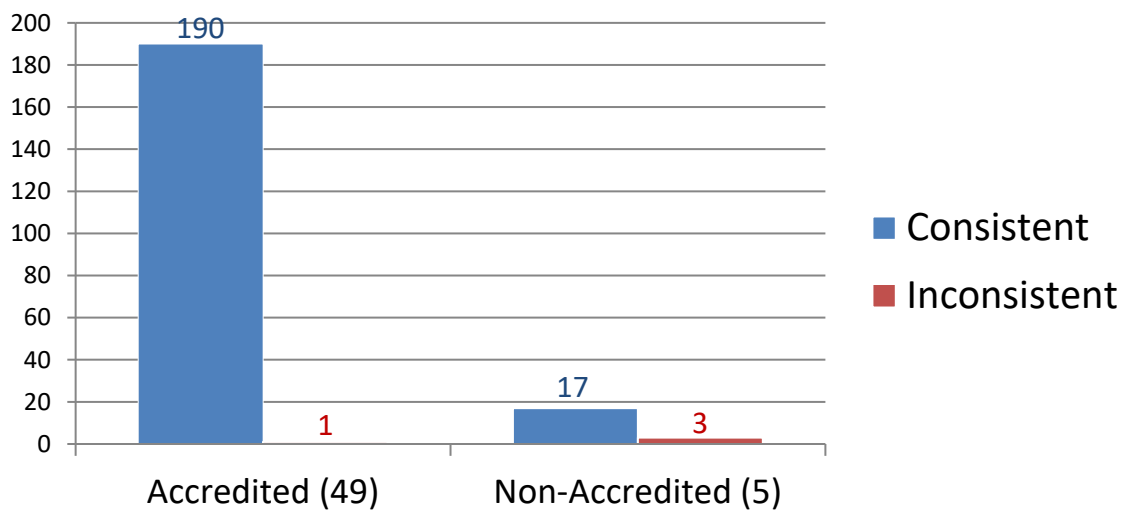
Appendix 2

Consistent vs Inconsistent Responses Compared to Assigned Values



Appendix 3

Consistent vs Inconsistent Responses Based on Accreditation

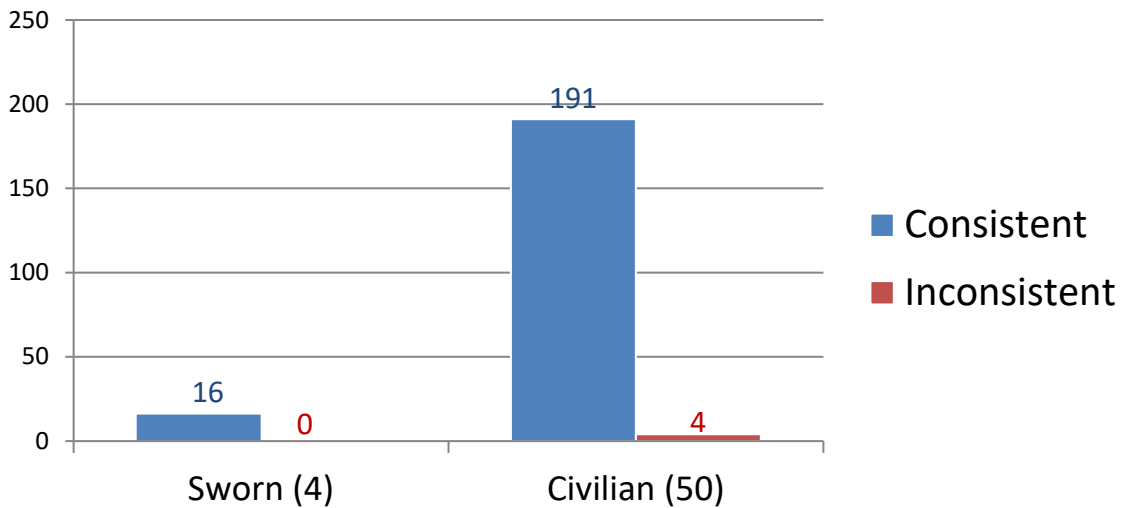


*Numerical values shown are based on **54 participant submissions** equaling **211 total responses**.

*For further information, please read ***Manufacturer's Additional Observations*** on the final page of this report.

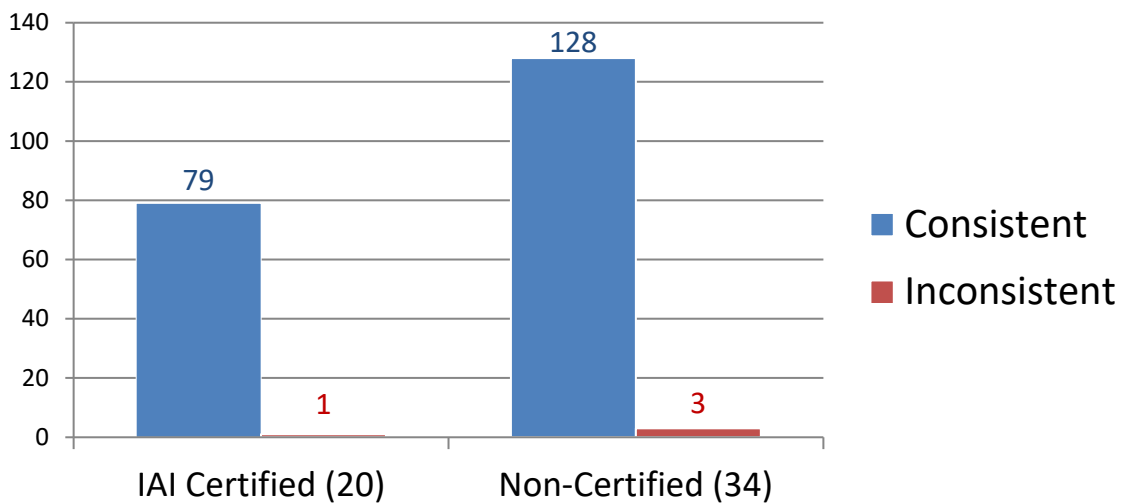
Appendix 4

Consistent vs Inconsistent Responses Based on Sworn or Civilian Status



Appendix 5

Consistent vs Inconsistent Responses Based on IAI Certification Status

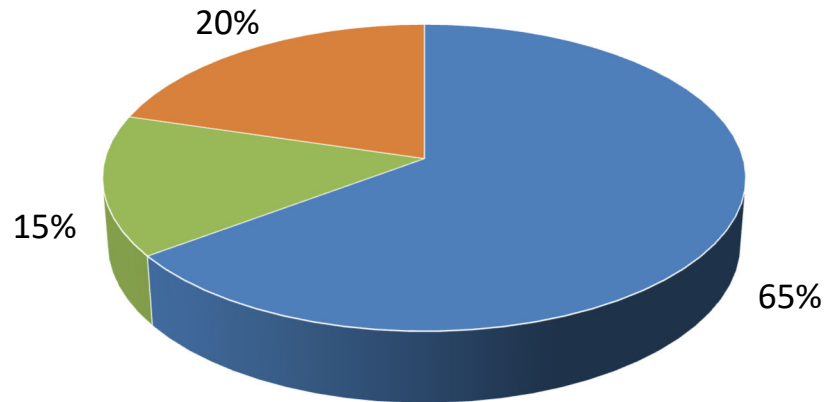


*Numerical values shown are based on **54 participant submissions** equaling **211 total responses**.

*For further information, please read ***Manufacturer's Additional Observations*** on the final page of this report.

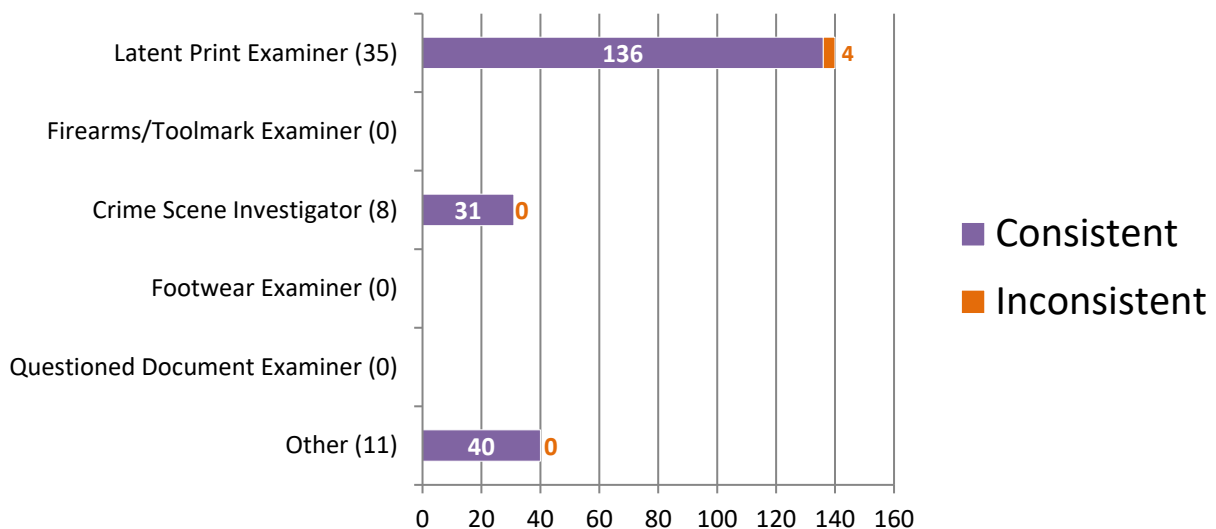
Appendix 6

Percentage of Participants Based on Primary Job Position



- Latent Print Examiner (35)
- Firearms/Toolmark Examiner (0)
- Crime Scene Investigator (8)
- Footwear Examiner (0)
- Questioned Document Examiner (0)
- Other (11)

Consistent vs Inconsistent Responses Based on Primary Job Position

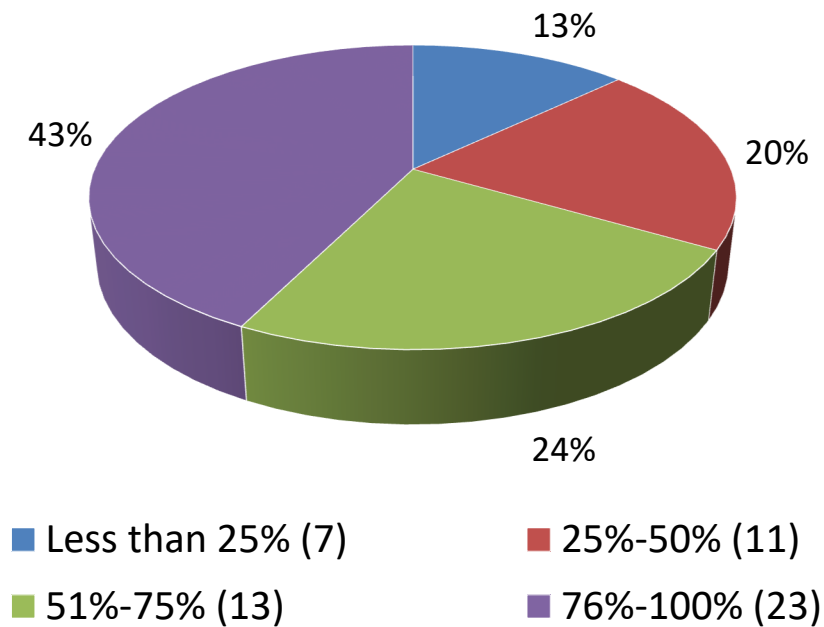


*Numerical values shown are based on **54 participant submissions** equaling **211 total responses**.

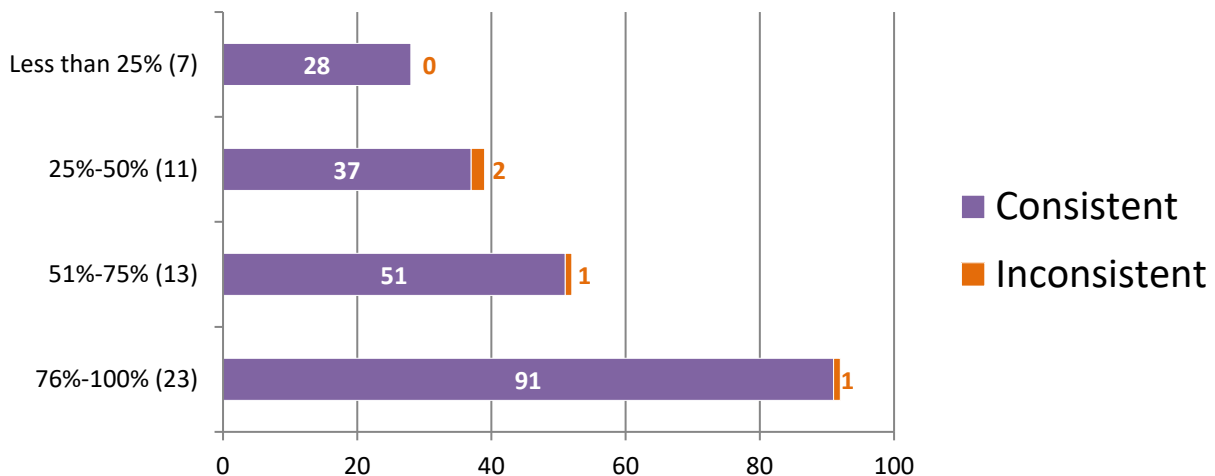
*For further information, please read **Manufacturer's Additional Observations** on the final page of this report.

Appendix 7

Percentage of Participants Based on Time Devoted to Processing of Latent Print Evidence



Consistent vs Inconsistent Responses Based on Time Devoted to Examination and Processing of Latent Print Evidence

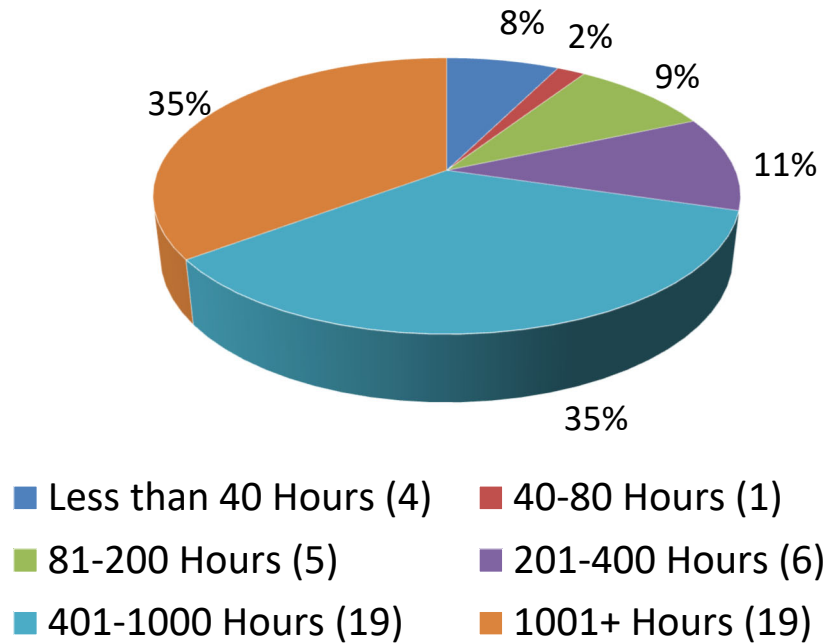


*Numerical values shown are based on **54 participant submissions** equaling **211 total responses**.

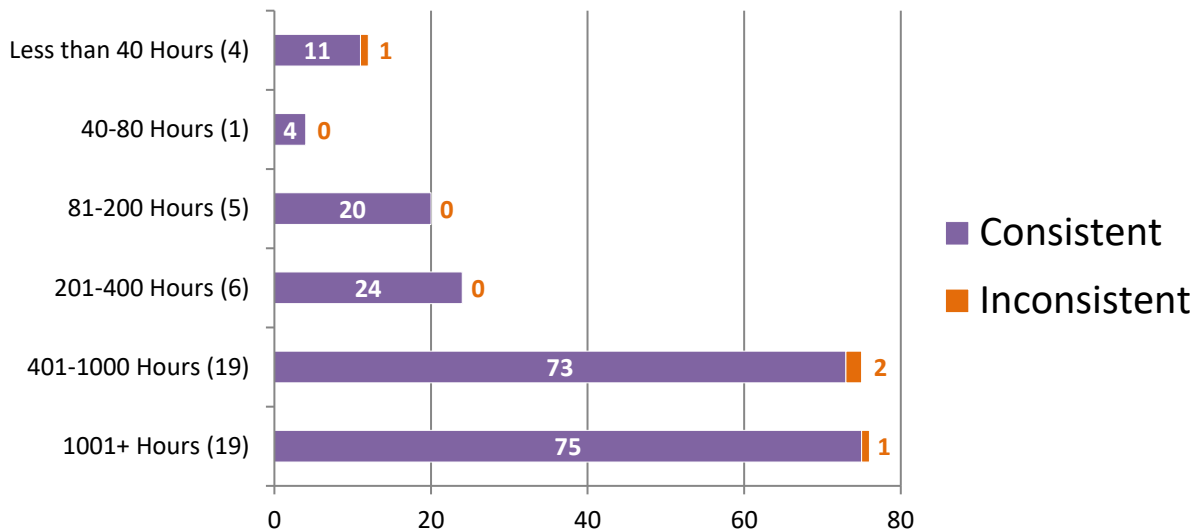
*For further information, please read **Manufacturer's Additional Observations** on the final page of this report.

Appendix 8

Percentage of Participants Based on Hours of Latent Print Processing Training Completed



Consistent vs Inconsistent Responses Based on Hours of Latent Print Processing Training Completed

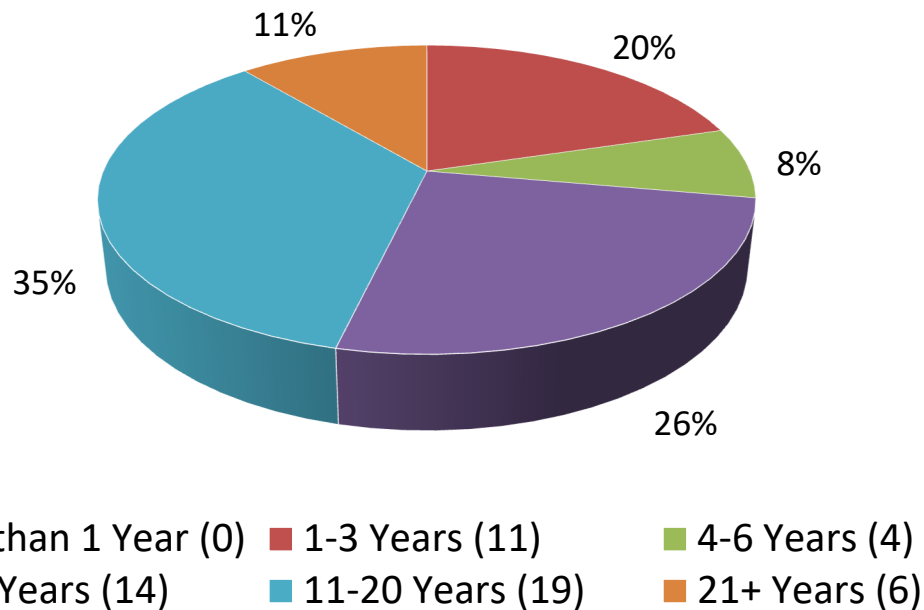


*Numerical values shown are based on **54 participant submissions** equaling **211 total responses**.

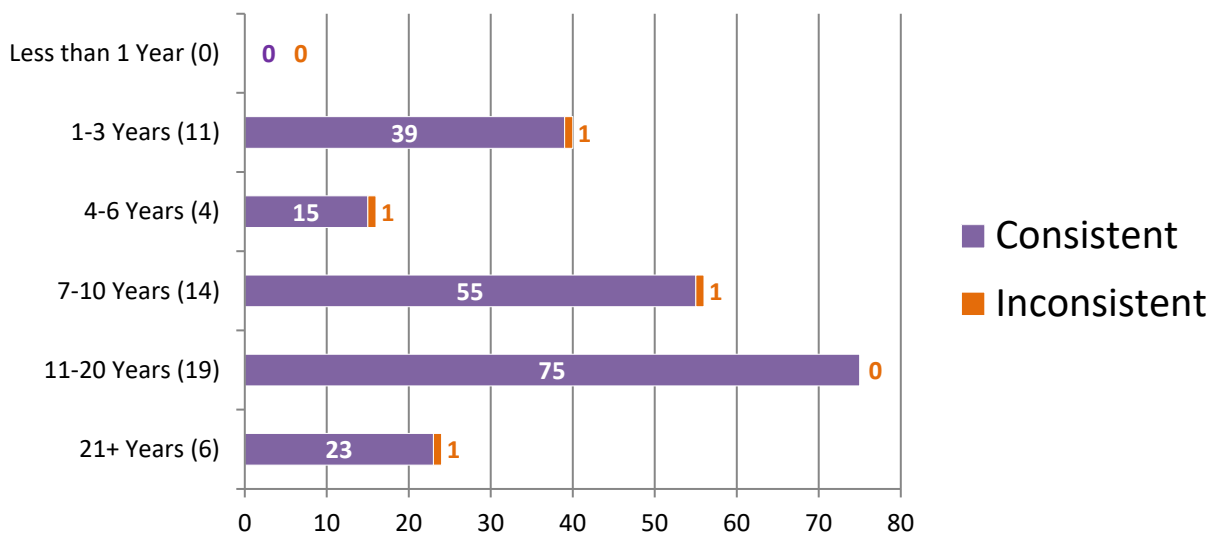
*For further information, please read **Manufacturer's Additional Observations** on the final page of this report.

Appendix 9

Percentage of Participants Based on Years of Experience in Latent Print Processing



Consistent vs Inconsistent Responses Based on Years of Experience in Latent Print Processing

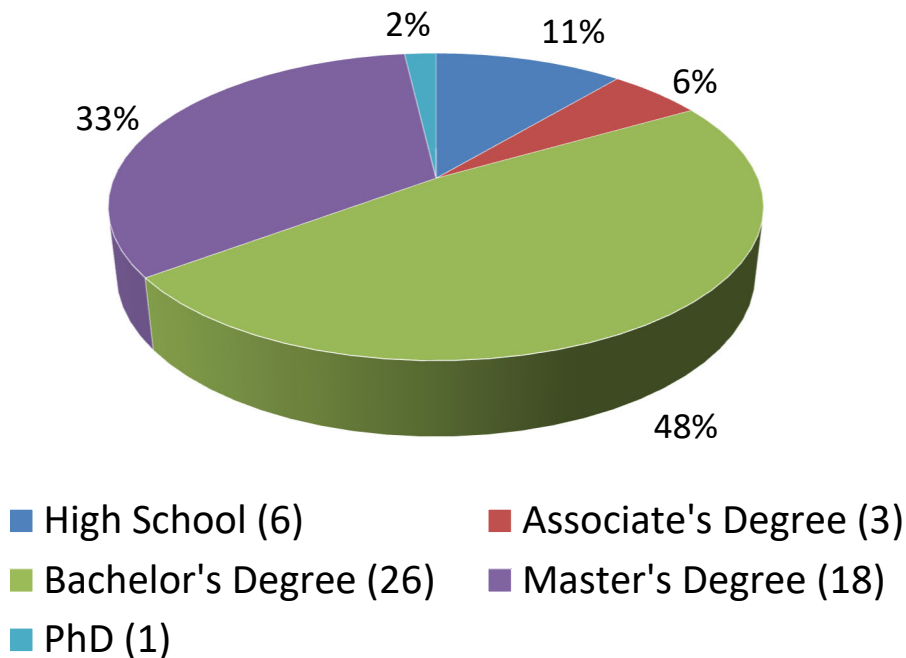


*Numerical values shown are based on **54 participant submissions** equaling **211 total responses**.

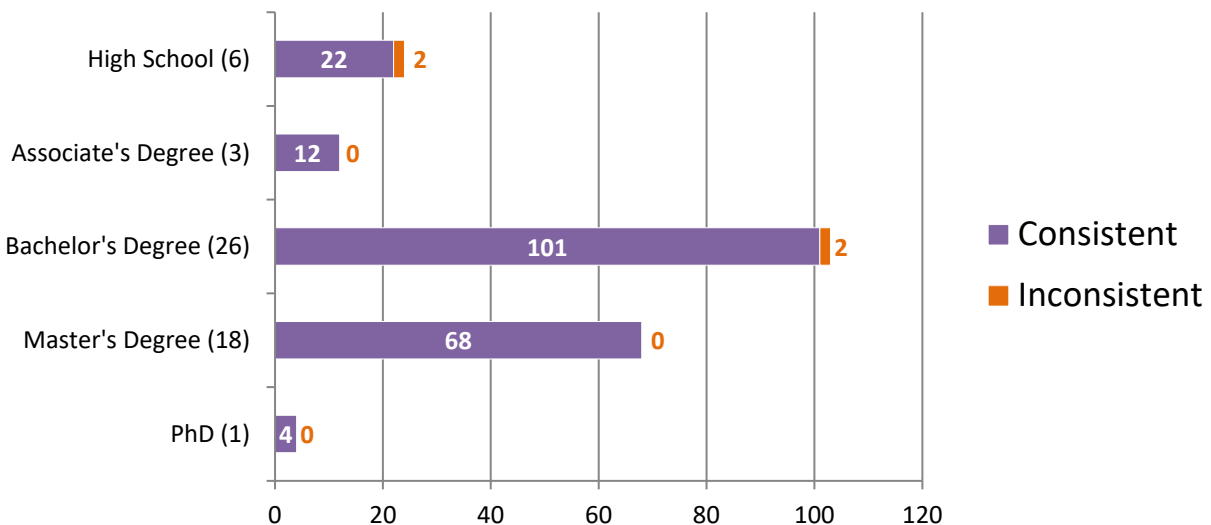
*For further information, please read **Manufacturer's Additional Observations** on the final page of this report.

Appendix 10

**Percentage of Participants
Based on Highest Level of Education Completed**



**Consistent vs Inconsistent Responses
Based on Highest Level of Education Completed**

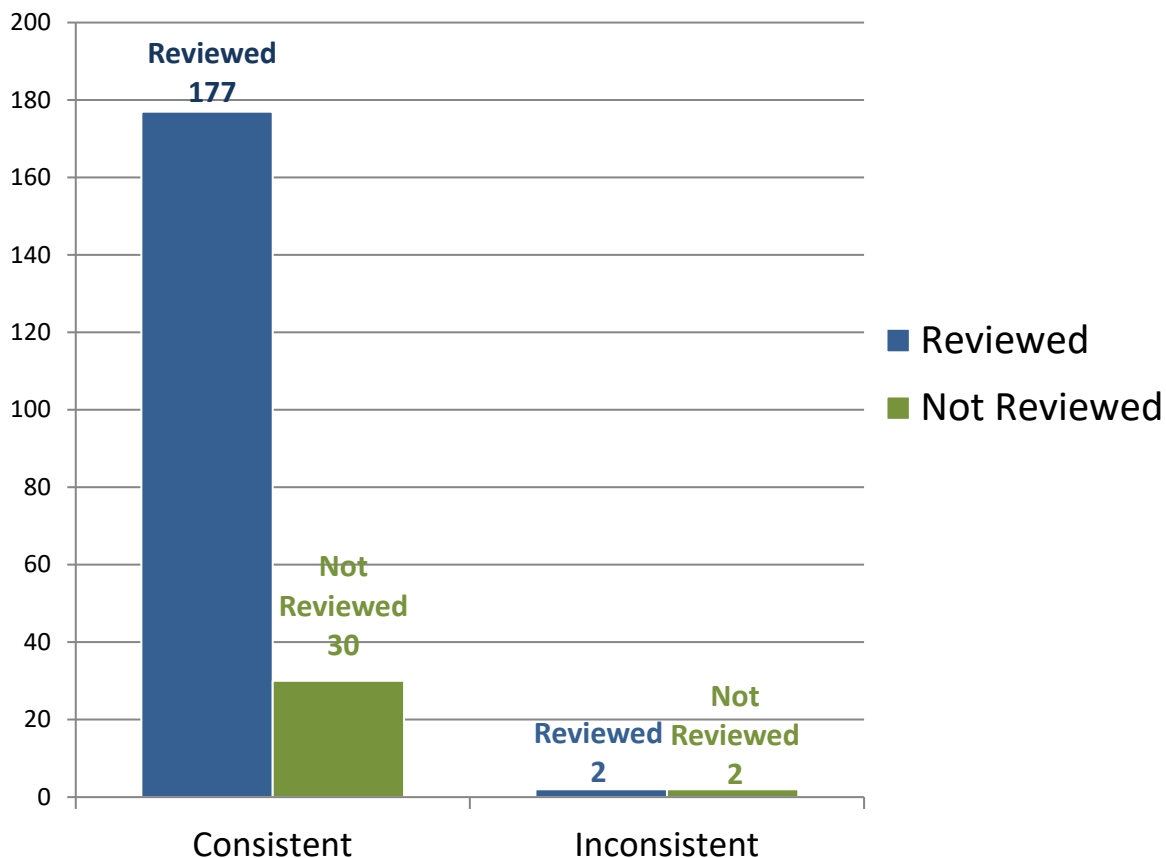


*Numerical values shown are based on **54 participant submissions** equaling **211 total responses**.

*For further information, please read **Manufacturer's Additional Observations** on the final page of this report.

Appendix 11

Consistent vs Inconsistent Responses Based on Review of Original Conclusions by another Examiner Prior to Submission



*Numerical values shown are based on **54 participant submissions** equaling **211 total responses**.

*For further information, please read ***Manufacturer's Additional Observations*** on the final page of this report.

Appendix 12

Participant Responses Listed by Test Code

Item #		Item #1	Item #2	Item #3	Item #4
Assigned Values		Friction Ridge Detail <u>Was</u> Developed and Supported with photograph	Friction Ridge Detail <u>Was</u> or <u>Was Not</u> Developed	Friction Ridge Detail <u>Was</u> Developed and Supported with photograph	Friction Ridge Detail <u>Was</u> Developed and Supported with photograph
Test Code	3113S20502	Friction Ridge Detail <u>Was</u> Developed and Supported with photograph	Friction Ridge Detail <u>Was</u> Developed and Supported with photograph	Friction Ridge Detail <u>Was Not</u> Developed	Friction Ridge Detail <u>Was</u> Developed and Supported with photograph
	8284N20502	Friction Ridge Detail <u>Was</u> Developed and Supported with photograph	Friction Ridge Detail <u>Was Not</u> Developed	Friction Ridge Detail <u>Was</u> Developed and Supported with photograph	Friction Ridge Detail <u>Was</u> Developed and Supported with photograph
	7885C20502	Friction Ridge Detail <u>Was</u> Developed and Supported with photograph	Friction Ridge Detail <u>Was Not</u> Developed	Friction Ridge Detail <u>Was</u> Developed and Supported with photograph	Friction Ridge Detail <u>Was</u> Developed and Supported with photograph
	395U20502	Friction Ridge Detail <u>Was Not</u> Developed	Friction Ridge Detail <u>Was Not</u> Developed	Friction Ridge Detail <u>Was</u> Developed and Supported with photograph	Friction Ridge Detail <u>Was</u> Developed and Supported with photograph
	8874I20502	Friction Ridge Detail <u>Was</u> Developed and Supported with photograph	Friction Ridge Detail <u>Was Not</u> Developed	Friction Ridge Detail <u>Was</u> Developed and Supported with photograph	Friction Ridge Detail <u>Was</u> Developed and Supported with photograph
	3683U20502	Friction Ridge Detail <u>Was</u> Developed and Supported with photograph	Friction Ridge Detail <u>Was Not</u> Developed	Friction Ridge Detail <u>Was</u> Developed and Supported with photograph	Friction Ridge Detail <u>Was</u> Developed and Supported with photograph
	4784I20502	Friction Ridge Detail <u>Was</u> Developed and Supported with photograph	Friction Ridge Detail <u>Was Not</u> Developed	Friction Ridge Detail <u>Was</u> Developed and Supported with photograph	Friction Ridge Detail <u>Was</u> Developed and Supported with photograph
	4910M20502	Friction Ridge Detail <u>Was</u> Developed and Supported with photograph	Friction Ridge Detail <u>Was Not</u> Developed	Friction Ridge Detail <u>Was</u> Developed and Supported with photograph	Friction Ridge Detail <u>Was</u> Developed and Supported with photograph
	8604K20502	Friction Ridge Detail <u>Was</u> Developed and Supported with photograph	Friction Ridge Detail <u>Was Not</u> Developed	Friction Ridge Detail <u>Was</u> Developed and Supported with photograph	Friction Ridge Detail <u>Was</u> Developed and Supported with photograph

	7510P20502	Friction Ridge Detail <u>Was</u> Developed and Supported with photograph	Friction Ridge Detail <u>Was Not</u> Developed	Friction Ridge Detail <u>Was</u> Developed and Supported with photograph	Friction Ridge Detail <u>Was</u> Developed and Supported with photograph
	8787U20502	Friction Ridge Detail <u>Was</u> Developed and Supported with photograph	Friction Ridge Detail <u>Was Not</u> Developed	Friction Ridge Detail <u>Was</u> Developed and Supported with photograph	Friction Ridge Detail <u>Was</u> Developed and Supported with photograph
	3179O20502	Friction Ridge Detail <u>Was</u> Developed and Supported with photograph	Friction Ridge Detail <u>Was Not</u> Developed	Friction Ridge Detail <u>Was</u> Developed and Supported with photograph	Friction Ridge Detail <u>Was</u> Developed and Supported with photograph
	5119Y20502	Friction Ridge Detail <u>Was</u> Developed and Supported with photograph	Friction Ridge Detail <u>Was Not</u> Developed	Friction Ridge Detail <u>Was</u> Developed and Supported with photograph	Friction Ridge Detail <u>Was</u> Developed and Supported with photograph
	5612O20502	Friction Ridge Detail <u>Was</u> Developed and Supported with photograph	Friction Ridge Detail <u>Was Not</u> Developed	Friction Ridge Detail <u>Was Not</u> Developed	Friction Ridge Detail <u>Was</u> Developed and Supported with photograph
	3450S20502	Friction Ridge Detail <u>Was</u> Developed and Supported with photograph	Friction Ridge Detail <u>Was Not</u> Developed	Friction Ridge Detail <u>Was</u> Developed and Supported with photograph	Friction Ridge Detail <u>Was</u> Developed and Supported with photograph
	2529L20502	Friction Ridge Detail <u>Was</u> Developed and Supported with photograph	Friction Ridge Detail <u>Was Not</u> Developed	Friction Ridge Detail <u>Was</u> Developed and Supported with photograph	No Answer *Unit does not process porous items
	1433D20502	Friction Ridge Detail <u>Was</u> Developed and Supported with photograph	Friction Ridge Detail <u>Was Not</u> Developed	No Answer *Unit does not process porous items	No Answer *Unit does not process porous items
	5241Y20502	Friction Ridge Detail <u>Was</u> Developed and Supported with photograph	Friction Ridge Detail <u>Was Not</u> Developed	No Answer *Unit does not process porous items	No Answer *Unit does not process porous items
	4303E20502	Friction Ridge Detail <u>Was</u> Developed and Supported with photograph	Friction Ridge Detail <u>Was Not</u> Developed	Friction Ridge Detail <u>Was</u> Developed and Supported with photograph	Friction Ridge Detail <u>Was</u> Developed and Supported with photograph
	5375T20502	Friction Ridge Detail <u>Was</u> Developed and Supported with photograph	Friction Ridge Detail <u>Was Not</u> Developed	Friction Ridge Detail <u>Was</u> Developed and Supported with photograph	Friction Ridge Detail <u>Was</u> Developed and Supported with photograph
	7769G20502	Friction Ridge Detail <u>Was</u> Developed and Supported with photograph	Friction Ridge Detail <u>Was Not</u> Developed	Friction Ridge Detail <u>Was</u> Developed and Supported with photograph	Friction Ridge Detail <u>Was</u> Developed and Supported with photograph

	3866X20502	Friction Ridge Detail <u>Was</u> Developed and Supported with photograph	Friction Ridge Detail <u>Was Not</u> Developed	Friction Ridge Detail <u>Was</u> Developed and Supported with photograph	Friction Ridge Detail <u>Was</u> Developed and Supported with photograph
	3093X20502	Friction Ridge Detail <u>Was</u> Developed and Supported with photograph	Friction Ridge Detail <u>Was Not</u> Developed	Friction Ridge Detail <u>Was</u> Developed and Supported with photograph	Friction Ridge Detail <u>Was</u> Developed and Supported with photograph
	4265H20502	Friction Ridge Detail <u>Was</u> Developed and Supported with photograph	Friction Ridge Detail <u>Was Not</u> Developed	Friction Ridge Detail <u>Was</u> Developed and Supported with photograph	Friction Ridge Detail <u>Was</u> Developed and Supported with photograph
	2077J20502	Friction Ridge Detail <u>Was</u> Developed and Supported with photograph	Friction Ridge Detail <u>Was Not</u> Developed	Friction Ridge Detail <u>Was</u> Developed and Supported with photograph	Friction Ridge Detail <u>Was</u> Developed and Supported with photograph
	4817E20502	Friction Ridge Detail <u>Was</u> Developed and Supported with photograph	Friction Ridge Detail <u>Was Not</u> Developed	Friction Ridge Detail <u>Was</u> Developed and Supported with photograph	Friction Ridge Detail <u>Was</u> Developed and Supported with photograph
	619I20502	Friction Ridge Detail <u>Was</u> Developed and Supported with photograph	Friction Ridge Detail <u>Was Not</u> Developed	Friction Ridge Detail <u>Was</u> Developed and Supported with photograph	Friction Ridge Detail <u>Was</u> Developed and Supported with photograph
	1079Q20502	Friction Ridge Detail <u>Was</u> Developed and Supported with photograph	Friction Ridge Detail <u>Was Not</u> Developed	Friction Ridge Detail <u>Was</u> Developed and Supported with photograph	Friction Ridge Detail <u>Was</u> Developed and Supported with photograph
	6842O20502	Friction Ridge Detail <u>Was</u> Developed and Supported with photograph	Friction Ridge Detail <u>Was Not</u> Developed	Friction Ridge Detail <u>Was</u> Developed and Supported with photograph	Friction Ridge Detail <u>Was</u> Developed and Supported with photograph
	1922Q20502	Friction Ridge Detail <u>Was</u> Developed and Supported with photograph	Friction Ridge Detail <u>Was Not</u> Developed	Friction Ridge Detail <u>Was</u> Developed and Supported with photograph	Friction Ridge Detail <u>Was</u> Developed and Supported with photograph
	2422R20502	Friction Ridge Detail <u>Was</u> Developed and Supported with photograph	Friction Ridge Detail <u>Was Not</u> Developed	Friction Ridge Detail <u>Was</u> Developed and Supported with photograph	Friction Ridge Detail <u>Was</u> Developed and Supported with photograph
	5958H20502	Friction Ridge Detail <u>Was</u> Developed and Supported with photograph	Friction Ridge Detail <u>Was Not</u> Developed	Friction Ridge Detail <u>Was</u> Developed and Supported with photograph	Friction Ridge Detail <u>Was</u> Developed and Supported with photograph
	4048P20502	Friction Ridge Detail <u>Was</u> Developed and Supported with photograph	Friction Ridge Detail <u>Was Not</u> Developed	Friction Ridge Detail <u>Was</u> Developed and Supported with photograph	Friction Ridge Detail <u>Was</u> Developed and Supported with photograph

	9213B20502	Friction Ridge Detail <u>Was</u> Developed and Supported with photograph	Friction Ridge Detail <u>Was Not</u> Developed	Friction Ridge Detail <u>Was</u> Developed and Supported with photograph	Friction Ridge Detail <u>Was</u> Developed and Supported with photograph
	5036F20502	Friction Ridge Detail <u>Was</u> Developed and Supported with photograph	Friction Ridge Detail <u>Was Not</u> Developed	Friction Ridge Detail <u>Was</u> Developed and Supported with photograph	Friction Ridge Detail <u>Was</u> Developed and Supported with photograph
	6181R20502	Friction Ridge Detail <u>Was</u> Developed and Supported with photograph	Friction Ridge Detail <u>Was Not</u> Developed	Friction Ridge Detail <u>Was</u> Developed and Supported with photograph	Friction Ridge Detail <u>Was</u> Developed and Supported with photograph
	7834U20502	Friction Ridge Detail <u>Was</u> Developed and Supported with photograph	Friction Ridge Detail <u>Was Not</u> Developed	Friction Ridge Detail <u>Was</u> Developed and Supported with photograph	Friction Ridge Detail <u>Was</u> Developed and Supported with photograph
	8386J20502	Friction Ridge Detail <u>Was</u> Developed and Supported with photograph	Friction Ridge Detail <u>Was Not</u> Developed	Friction Ridge Detail <u>Was</u> Developed and Supported with photograph	Friction Ridge Detail <u>Was</u> Developed and Supported with photograph
	7014E20502	Friction Ridge Detail <u>Was</u> Developed and Supported with photograph	Friction Ridge Detail <u>Was Not</u> Developed	Friction Ridge Detail <u>Was</u> Developed and Supported with photograph	Friction Ridge Detail <u>Was</u> Developed and Supported with photograph
	4256J20502	Friction Ridge Detail <u>Was</u> Developed and Supported with photograph	Friction Ridge Detail <u>Was Not</u> Developed	Friction Ridge Detail <u>Was</u> Developed and Supported with photograph	Friction Ridge Detail <u>Was</u> Developed and Supported with photograph
	6413L20502	Friction Ridge Detail <u>Was Not</u> Developed	Friction Ridge Detail <u>Was Not</u> Developed	Friction Ridge Detail <u>Was</u> Developed and Supported with photograph	Friction Ridge Detail <u>Was</u> Developed and Supported with photograph
	3512V20502	Friction Ridge Detail <u>Was</u> Developed and Supported with photograph	Friction Ridge Detail <u>Was Not</u> Developed	Friction Ridge Detail <u>Was</u> Developed and Supported with photograph	Friction Ridge Detail <u>Was</u> Developed and Supported with photograph
	7697O20502	Friction Ridge Detail <u>Was</u> Developed and Supported with photograph	Friction Ridge Detail <u>Was Not</u> Developed	Friction Ridge Detail <u>Was</u> Developed and Supported with photograph	Friction Ridge Detail <u>Was</u> Developed and Supported with photograph
	1684O20502	Friction Ridge Detail <u>Was</u> Developed and Supported with photograph	Friction Ridge Detail <u>Was Not</u> Developed	Friction Ridge Detail <u>Was</u> Developed and Supported with photograph	Friction Ridge Detail <u>Was</u> Developed and Supported with photograph
	8044F20502	Friction Ridge Detail <u>Was</u> Developed and Supported with photograph	Friction Ridge Detail <u>Was Not</u> Developed	Friction Ridge Detail <u>Was</u> Developed and Supported with photograph	Friction Ridge Detail <u>Was</u> Developed and Supported with photograph

	6143E20502	Friction Ridge Detail <u>Was</u> Developed and Supported with photograph	Friction Ridge Detail <u>Was Not</u> Developed	Friction Ridge Detail <u>Was</u> Developed and Supported with photograph	Friction Ridge Detail <u>Was</u> Developed and Supported with photograph
	5460W20502	Friction Ridge Detail <u>Was</u> Developed and Supported with photograph	Friction Ridge Detail <u>Was Not</u> Developed	Friction Ridge Detail <u>Was</u> Developed and Supported with photograph	Friction Ridge Detail <u>Was</u> Developed and Supported with photograph
	9098P20502	Friction Ridge Detail <u>Was</u> Developed and Supported with photograph	Friction Ridge Detail <u>Was Not</u> Developed	Friction Ridge Detail <u>Was</u> Developed and Supported with photograph	Friction Ridge Detail <u>Was</u> Developed and Supported with photograph
	3223O20502	Friction Ridge Detail <u>Was</u> Developed and Supported with photograph	Friction Ridge Detail <u>Was Not</u> Developed	Friction Ridge Detail <u>Was</u> Developed and Supported with photograph	Friction Ridge Detail <u>Was</u> Developed and Supported with photograph
	8872Z20502	Friction Ridge Detail <u>Was</u> Developed and Supported with photograph	Friction Ridge Detail <u>Was Not</u> Developed	Friction Ridge Detail <u>Was</u> Developed and Supported with photograph	Friction Ridge Detail <u>Was</u> Developed and Supported with photograph
	278S20502	Friction Ridge Detail <u>Was</u> Developed and Supported with photograph	Friction Ridge Detail <u>Was Not</u> Developed	Friction Ridge Detail <u>Was</u> Developed and Supported with photograph	Friction Ridge Detail <u>Was</u> Developed and Supported with photograph
	524W20502	Friction Ridge Detail <u>Was</u> Developed and Supported with photograph	Friction Ridge Detail <u>Was Not</u> Developed	Friction Ridge Detail <u>Was</u> Developed and Supported with photograph	Friction Ridge Detail <u>Was</u> Developed and Supported with photograph
	7571O20502	Friction Ridge Detail <u>Was</u> Developed and Supported with photograph	Friction Ridge Detail <u>Was Not</u> Developed	Friction Ridge Detail <u>Was</u> Developed and Supported with photograph	Friction Ridge Detail <u>Was</u> Developed and Supported with photograph
	8878W20502	Friction Ridge Detail <u>Was</u> Developed and Supported with photograph	Friction Ridge Detail <u>Was Not</u> Developed	Friction Ridge Detail <u>Was</u> Developed and Supported with photograph	Friction Ridge Detail <u>Was</u> Developed and Supported with photograph

Totals

Item #	Item #1	Item #2	Item #3	Item #4
Assigned Values	Friction Ridge Detail <u>Was</u> Developed and Supported with photograph	Friction Ridge Detail <u>Was Not</u> Developed	Friction Ridge Detail <u>Was</u> Developed and Supported with photograph	Friction Ridge Detail <u>Was</u> Developed and Supported with photograph
Consistent Responses	52	54	50	51
Inconsistent Responses	2	0	2	0
Percentage of Consistent Responses	96%	100%	96%	100%

Participant's Additional Comments

Test Code	Comments
3113S20502	Regarding Item 4 : I feel certain that there was visible ridge detail on this item, however, there was an issue in the Lab with humidity and my ability to process the material in a timely manner. The print obviously melted. Regarding Item 3 : Thought I saw something fluorescing under the LASER, but couldn't capture an image.
5612O20502	On Item 3 , I assumed that it was traditional paper and proceeded to process with ninhydrin and heat after observing what seemed to be efficient ridge detail with the naked eye. Right after I applied the nin, I observed extreme running which lead me to believe that it was probably wax coated and I absolutely should have introduced to fuming tank and black powdered before I proceeded with any other technique. Valuable lesson learned, as the ninhydrin appears to have eliminated any ridges that I thought were there.
3450S20502	Exported from database at 1000 ppi.
2529L20502	Item #4 was not processed: Porous material and adhesive backing should be impounded to the lab for chemical processing. Crime Scene Unit only utilizes powder processing.
8874I20502	Item 1 : On visual examination, at the backside of the metal belt clip, there was an ignition of weakness print looks like fingerprint or print from woolen cloth. Anyway this ignition was disappeared after the superglue treatment. Item 3 : On visual examination was noticed a fingerprint mark on the white surface of key tag that also expands on the metal surface rounded the white one. It was too low, so actually it was needed to use both methods (superglue and NH) on the same item. Also we noticed that on the surface, that marked with fingerprint, was clear but and on the other side of white surface there was a stain colored light beige.

1079Q20502	<p>All items pre-treated.</p> <p>Item 1: Image 1 - developed with Superglue (SG) Image 2 - post treated with dye (SGY)</p> <p>Item 3: Image 1 - developed with Superglue (SG) Image 2 - post treated with powder(SGM)</p> <p>Item 4: Image 1 - developed with DFO (DFO) Image 2 - item reversed for imaging to help remove writing.</p>
4784I20502	<p>Item 1 - exam daylight - result mark a produced, followed by Superglue fuming + BY-40 dye-stain and fluorescent exam result mark a re-photographed.</p> <p>Item 3 - exam daylight - result mark b produced, followed by superglue fuming and powdering using black granular powder, mark b re-photographed.</p> <p>Item 4 - Indandione process produced mark c, followed by sequential treatment - ninhydrin - resulting in mark c re-photographed.</p>
1684O20502	Photo for Item 4 may appear darker on different computer monitors.
8604K20502	<p>Full sequential processing on all items.</p> <p>VIS/GMB1 same mark as SGFL/GMB1.</p> <p>VIS/GMB2 same mark as P/GMB2.</p> <p>IND/GMB4 same mark as NIN/GMB4. ESDA also taken on Item 4 which gave ESDA/GMB3.</p>
8284N20502	Ridge detail developed with superglue on Item 3; however, powder did not develop it as expected and a photo was not taken directly after superglue processing.

Manufacturer's Additional Observations

Based upon a review of the submitted responses, the following observations were noted:

1. Regardless of experience, training, time devoted to processing, or education level no significant observations were noted.
2. Only 4 inconsistent answers were submitted and three of the four were submitted by non-certified examiner(s) who work in a non-accredited unit.
3. All four of the inconsistent answers were submitted by civilian employees whose primary job position is a latent print examiner.

Authorized by: Ron Smith, President
Date of Issue: November 27, 2020